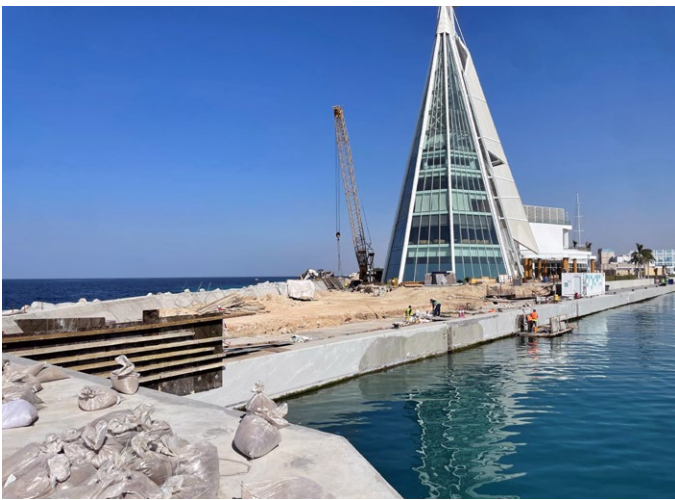


# CASE STUDY:

## Jeddah Yacht Club, Saudi Arabia

### Jeddah Yacht Club Specifies KPS Piping for New Fuelling Station

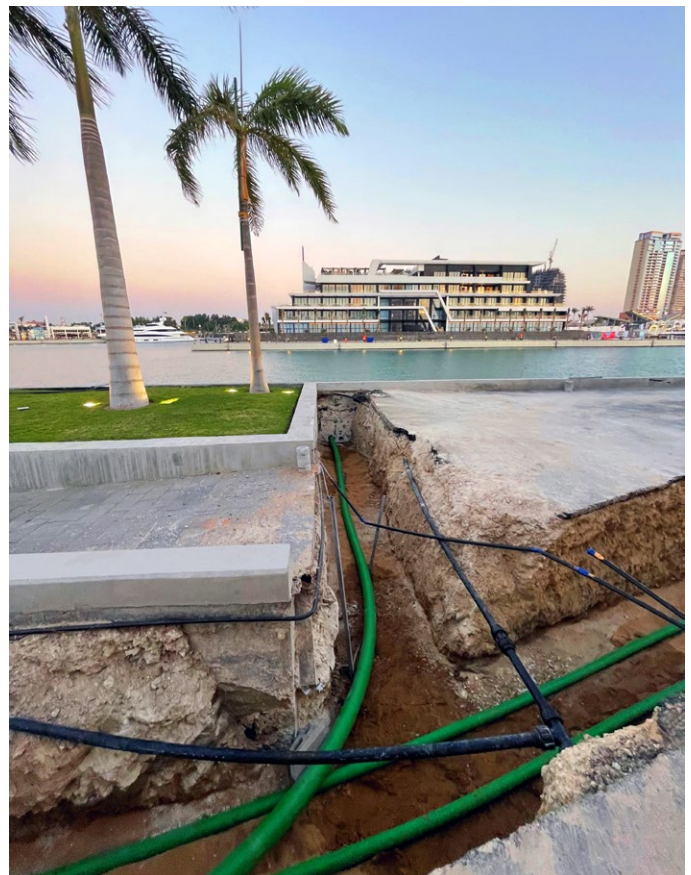
As part of the upgrade of the Jeddah Yacht club ahead of the nearby Formula 1 race, RMC (an Al Rewaya subsidiary) was contracted, to build a new yacht refuelling station. KPS piping was specified for the fuelling lines due to its easy fast installation and technical support.



Completion 4 weeks before the Formula 1 race was essential

#### Key Requirements

- Fast simple installation.
- Completion 4 weeks before the Formula 1 event.
- In-person technical training and support before and during the project.
- 4" (125/110 mm) piping for larger yachts.
- 2" (75/63 mm) piping for smaller yachts.
- Long service life.
- Protection of water/surroundings.
- Conductive, avoiding potential static build-up and sparks.



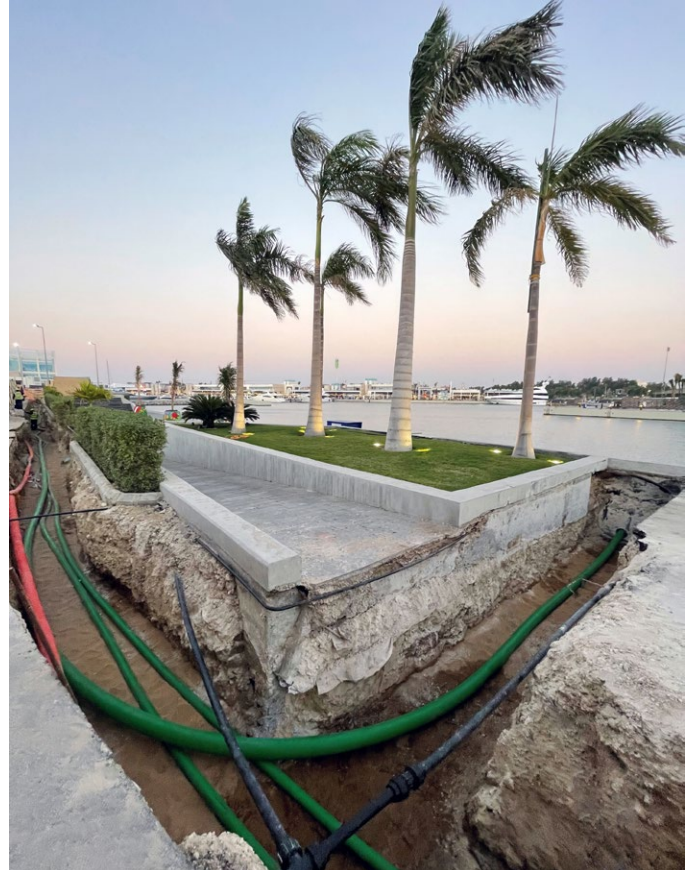
4" (125/110 mm) piping was specified for the larger yachts



# CASE STUDY: Jeddah Yacht Club, Saudi Arabia



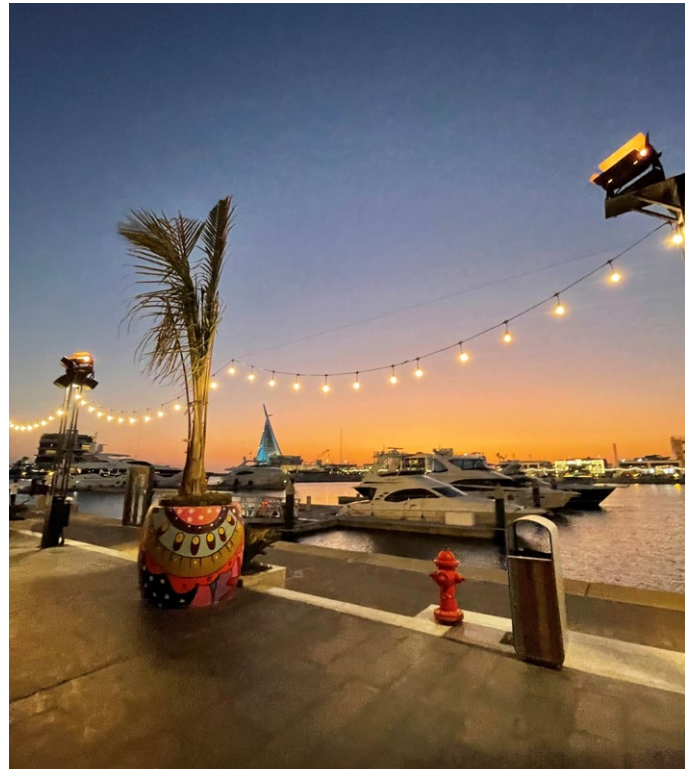
260 metre (75/63 mm) lines for smaller yachts



KPS piping is unreactive to saltwater, removing the risk of corrosion

## The KPS Solution

- 1 90 metre 4" (125/110 mm) line for larger yachts.
- 2 260 metre 2" (75/63 mm) lines for smaller yachts.
- Multiple in-person training and technical support visits before and during the project.
- Simple installer-friendly installation with KPS' compact electrofusion fittings, minimising the number of welds needed and the installation time.
- No corrosion: KPS' HDPE piping unreactive to saltwater.
- Double wall piping provides an extra layer of protection.
- Installation completed ahead of schedule.
- Conductive, preventing static buildup and allowing safe grounding.



Protection of water/surroundings was a key priority for the installation