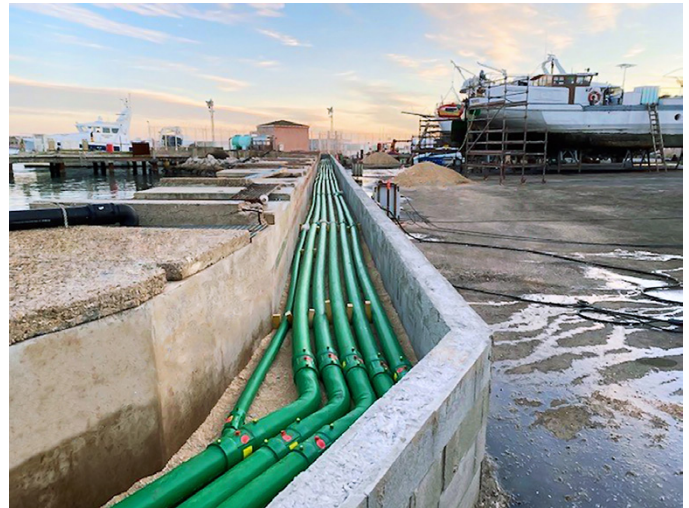


Sète Port, Montpellier, France

Montpellier Port Replace Corroding Metal Pipes With KPS Corrosion-Resistant HDPE Piping To Prevent Fuel Permeation



A long-term replacement for corroded steel pipes at Sète Port, Montpellier was required



KPS double wall piping adds an extra layer of security

Project Overview

The managing authority of Sète Port in the south of France chose KPS HDPE conductive pipe to replace their previously installed steel pipe system for their fuelling network. A replacement was needed to prevent the steel pipes from corroding and fuel permeation into the environment, which would damage wildlife and be costly to clean up.

Problem

Sète Port began work on their fuelling network to replace their previously installed steel piping system. Over time, the proximity of the pipes to the salty sea environment had caused them to become rusty and corrode, which posed a risk of fuel permeation and leaks into the environment, which is especially important to avoid in ports and marinas due to the volume of fuel being used and the proximity to the sea/ocean.



KPS piping provided Sète Port a zero-permeation solution



KPS 4" double wall pipe (125/110mm) provides a 933 litre/min flow rate



KPS 4" double wall 90° pipe elbows are a compact solution for projects where space is tight



KPS double wall pipework includes an interstitial space between the inner and outer pipes, providing an extra layer of security



KPS piping is designed for fast, simple installation



KPS piping includes an EVOH permeation barrier and a conductive layer of carbon black



Conductive KPS piping is electrostatically safe, preventing potential static build-up



KPS 4" piping allows a flow rate of 933 litres/minute enabling fast fuel delivery

Solution

KPS piping provided Sète Port with a zero permeation, long-term fuel transfer solution, replacing the ageing, corroding steel piping.

Key features of KPS piping for this project:

- Completely un-reactive to saltwater, eliminating the risk of deterioration/corrosion from constant exposure.
- Conductive KPS piping is electrostatically safe, preventing potential static build-up and ensuring safe grounding in the event of sparks.
- Engineered for quick and easy installation, KPS double wall electrofusion fittings are compact and weld both pipe walls simultaneously.
- KPS 4" piping allows a flow rate of 933 litre/minute enabling fast fuel delivery.
- On-site training is available to familiarise installers with KPS easy install piping and electrofusion welding system.

KPS piping is engineered for quick and easy installation. KPS double wall electrofusion fittings weld both pipe walls simultaneously. All of this, along with the professional training program with which KPS certifies each installer, makes KPS an ideal choice for port, marina, and harbour projects.

Results

Sète Port now has a reliable zero permeation piping system which will continue to perform years to come.



KPS piping has provided Sète Port with a long-term replacement for their previously installed corroded steel pipework

For more information on the KPS product range please contact us:

Email: info@kpspiping.com
Web: kpspiping.com